

General
EQUIPMENT COMPANY

eHelp!

Solutions for Equipment Professionals



October 2012 • ISSUE 7P

How do You Purchase Replacement Subaru® Engine Parts for the General 240 One Man Hole Digger?

1) Replacement parts, service and warranty support for the Subaru EH035V engine used with our 240 Hole Digger are provided by Robin America. General Equipment Company DOES NOT supply replacement engine parts.

2) Need a copy of the official parts diagrams for the engine? Just download and print a copy from the LIBRARY section of our website: <http://www.generalequip.com/library.php>.

Need help?

Call us at 800.533.0524, or
email: support@generalequip.com.

3) For ordering parts from Robin America go to their website: www.robinamerica.com.

4) Need help for anything not related to the engine? Call us at 800.533.0524, or email: support@generalequip.com.

PARTS MANUAL

Models

EH035V

ENGINE

For General Equipment

PUB-EP
Rev. 0406



M240

5) If you need a replacement parts diagrams for the 240 Hole Digger, it's fast and easy to download and print a copy from the LIBRARY section of our website: www.generalequip.com.

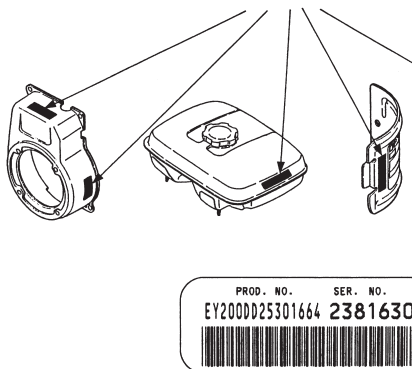
If you have any questions or comments, please feel free to contact us.
Telephone: 800.533.0524 | Email: support@generalequip.com

HOW TO USE THIS MANUAL

Robin engines are identified by MODEL, SPECIFICATION, and CODE NUMBER. For each model there may be many different versions called specifications. Each specification will be unique in some way. The difference may only be the paint color or it may have a different type of PTO or some other significant difference.

In order to identify the correct service part number, it is important to know the specification and code numbers for your engine. The specification and code numbers are known as the PRODUCT NUMBER.

All Robin 4 cycle engines have a Product Number label similar to the one shown below:



The Product Number Label has a 15 digit alphanumeric string that identifies the SPECIFICATION (SPEC) number (11 digits) and the CODE number (4 digits). Note the illustration below:

E H 0 3 5 **0 0 0 0 0 0 0 0 0 0 0** **X X X**

SPEC NO. (11 digits) CODE NO. (4 digits)

PRODUCT NO. (15 digits)

EH035V

- 3 -

Example Pages

MANUAL LAYOUT

1— SECTION 6 FUEL GROUP									
2— FIG. 600									
DETAIL A									
1— SECTION 6 FUEL GROUP									
REF.	PART NO.	DESCRIPTION	QTY.	REMARKS	FROM-TO	FIG.			
10	267-60103-01	FUEL TANK CP	1	YD, YS TYPE, BLACK		600			
3	267-60101-01	FUEL TANK CP	1	YELLOW		600			
27	073-20039-00	LABEL, WARNING	1	YD, YS TYPE		600			
30	043-04300-15	FUEL TANK CAP CP	1			600			
31	267-60201-03	LABEL, EMISSION	1	YD, YS TYPE		600			
40	064-13600-10	FUEL FILTER	1			600			
50	064-20021-01	FUEL STRAINER AY	1			600			
-1	064-20002-20	FILTER	1			600			
-2	064-20002-30	GASKET	1			600			
-3	064-20019-10	CLIP	1			600			

- SECTION NAME** Parts are broadly classified according to their functions. Refer to the Group Index (table of contents) for respective section name.
- FIG. No.** The FIG. number indexes the reference and part numbers to the illustration. Figure numbers that vary only in the tens place (i.e.: 700 and 710) are in a group of the same section (i.e.: Electrical Device Group).
- REF. No.** The Reference number identifies the part illustration with the corresponding part number in the part list.
- SUBASSEMBLY** SUBASSEMBLY parts of part assembly are listed below the assembly part. The subassembly part reference number is indicated by the number led by "-" such as "-1", "-2".
- PART NUMBER** It is the number assigned for sales unit. Use the PART No. when making an order.
- DESCRIPTION** It is designation of the part.
- QTY.** Quantity of each part used for each product.
- REMARKS** This gives a distinctive feature and/or a supplementary comment for the type, the specification, and the part concerned. It also shows part number(s) interchangeable for the part.
- FROM-TO** This section shows the CODE No. to indicate the history of progress in which improved parts have been introduced in the product. The FROM-TO CODE No. helps to identify PART No. being employed in the product concerned. See the examples below:

 - The part is used in the product irrespective of CODE No.
 2101- The part is used in the products with CODE No. of 2101 and after this number.
 - 2100 The part is used in the products with CODE No. of 2100 and before this number.

EH035V

- 4 -

04-06

Connect With Us.



www.generalequip.com

+ 507.451.5510 (t)
800.533.0524 (t)
+ 507.451.5511 (f)



General
EQUIPMENT COMPANY