

General
EQUIPMENT COMPANY

Help!

Solutions for Equipment Professionals



July 2013 • ISSUE 17P

It's summertime and augers are in high demand. Is it time for some very much needed auger maintenance?

Summer activity increases the demand for renting augers. It also increases the wear rates for high wear parts, including teeth, blades and screw bits. Good bit maintenance practices will provide your customers with higher satisfaction from their rental experience. That means more repeat customers!

Need help?

Call us at 800.533.0524, or

email: support@generalequip.com

Take a look. Is it time to replace those worn parts on your Two Man augers?

Note the hole provided in the 35HFC Tooth. The hole is a wear indicator. When the tooth wears down to the hole, it is time to replace the tooth! Protect your investment. **Figure 1.**



FIGURE 1.

This is what happens when teeth are not replaced as needed. The replacement tooth was then welded to secure it to the bit shank plate. When the tooth further wears, the auger can only be scrapped. Protect your investment! **Figure 2.**

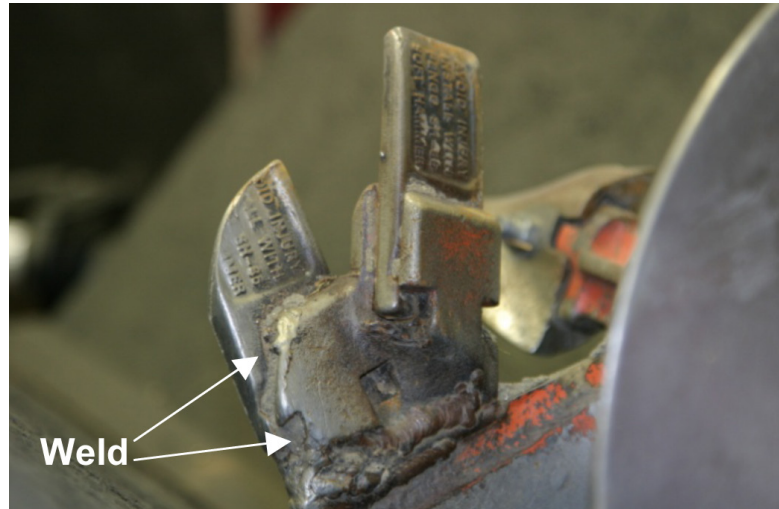


FIGURE 2.

Poor maintenance allowed this auger to be rented without a Screw Bit or tip bolted to the drive lug. Do you have Two Man auger that look like this? If so, they need to be scrapped because of safety and performance considerations. Protect your investment! **Figure 3.**



FIGURE 3.

*If you have any questions or comments, please feel free to contact us.
Telephone: 800.533.0524 | Email: support@generalequip.com*

Connect With Us.



www.generalequip.com

+ 507.451.5510 (t)
800.533.0524 (t)
+ 507.451.5511 (f)



General
EQUIPMENT COMPANY