



eHelp!

Solutions for Equipment Professionals



April 2013 • ISSUE 14P

Guide to RIP-R-STRIPPER® Blades Part Number, Description and Application

For use with FCS10 or FCS16 as stated below.



Blades for Removing VCT



Part Number: FCS16-1100

Description: Blade, straight, 4" x 6" wide, dual beveled edge.

Application: For use with general purpose removal projects on both concrete and wood surfaces. For use with FCS10, FCS16.



Part Number: FCS16-1300

Description: Blade, straight, 3" x 10", single beveled edge.

Application: For use with general removal projects on both concrete and wood floors. For use with FCS10, FCS16.

Examples only!



FCS16 Removing VCT
from concrete.



FCS10 Removing VCT
from concrete.

Blade for Removing Mastics, Adhesives or Material Build-Ups

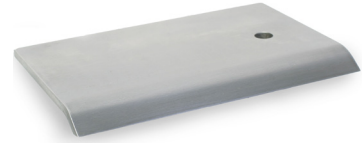


Mastic removal blades scrape mastics, glues, etc from concrete.

Part Number: FCS16-1200

Description: Blade, mastic removal, 6" wide, single beveled edge.

Application: For removing mastic and thin film coverings from concrete floors ONLY. For use with FCS10, FCS16.



Blades for Removing Linoleum or Rubber-Backed Carpet



Scoring blades cut sheet-type covering materials into 8" wide strips.

Part Number: FCS16-1500

Description: Blade, scoring, 8" wide, beveled edge FACING UP.

Application: For use removing glued carpet and sheet type linoleum, rubber, PVC etc. coverings from concrete surfaces ONLY. For use with FCS10, FCS16.



Part Number: FCS16-1600

Description: Blade, scoring, 8" wide, beveled edge FACING DOWN.

Application: For use removing glued carpet and sheet type linoleum, rubber, PVC etc. coverings from wood surfaces ONLY. For use with FCS10, FCS16.



If you have any questions or comments, please feel free to contact us.

Telephone: 800.533.0524 | Email: support@generalequip.com

Connect With Us.



www.generalequip.com

+ 507.451.5510 (t)
800.533.0524 (t)
+ 507.451.5511 (f)



General
EQUIPMENT COMPANY